

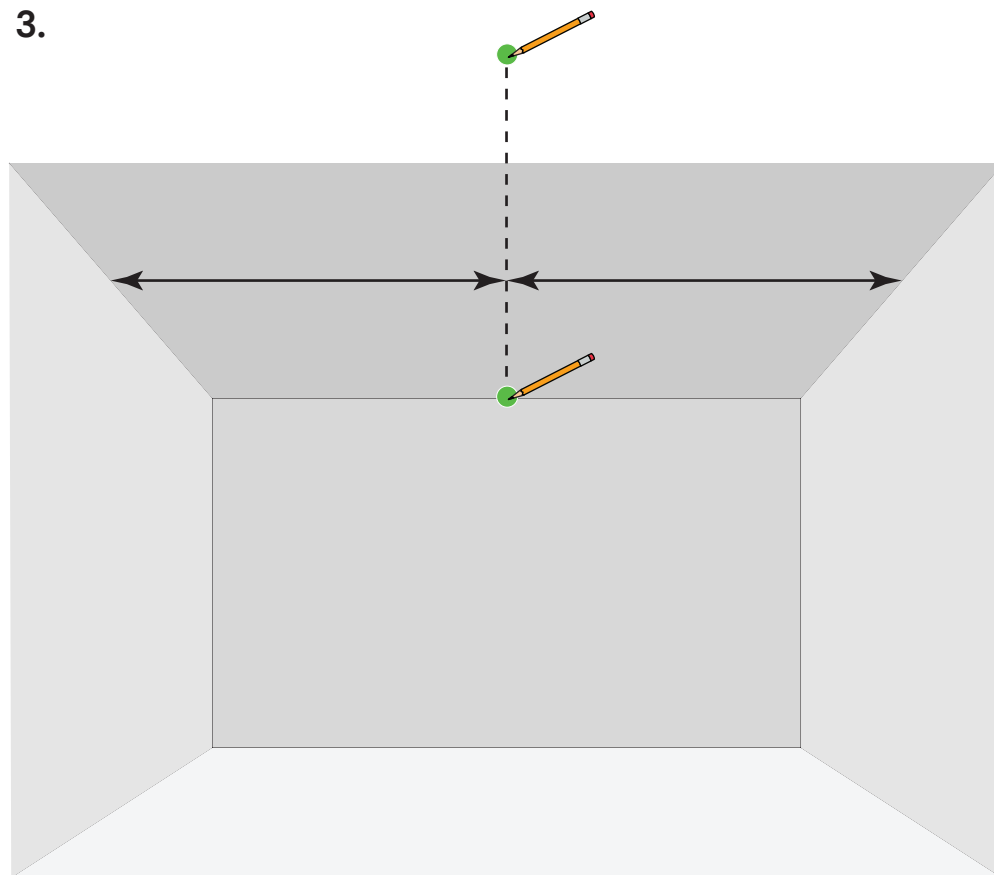
Tools

- Pliers
- Chalk line reel
- Phillips screwdriver
- Drill with Phillips bit

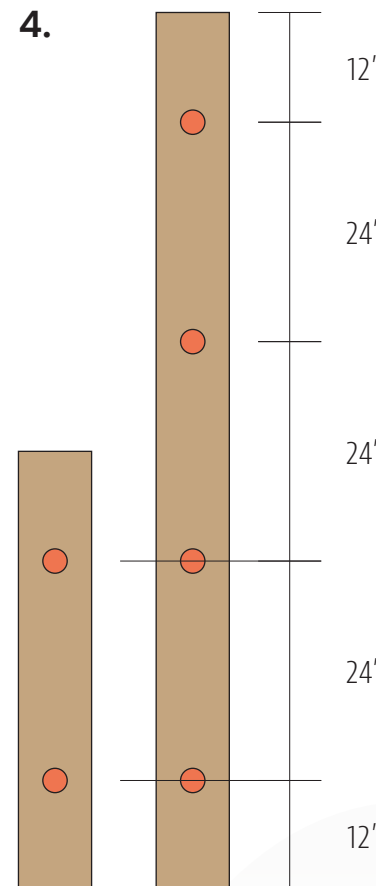
Hardware

- Rotofast Snap-on Anchors
- Spacers/Stabilizers

3.



4.



Instructions

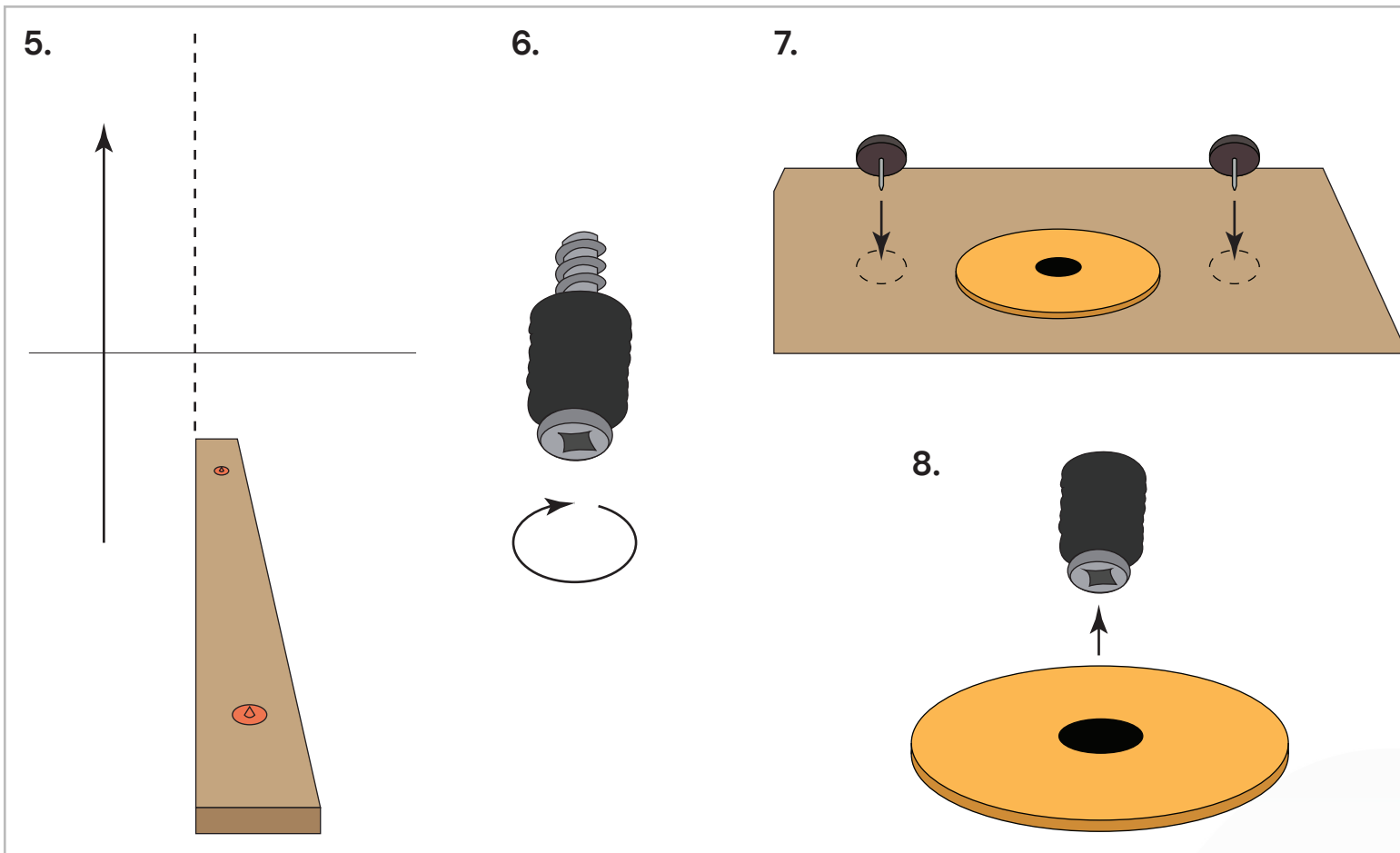
1. Prior to installation please check and verify that all required components have been received. Make sure to have enough hardware to complete the job – supplied and not supplied.
2. For most applications, it is common to paint the ceiling to similarly match the species and stain of the Aoudi planks.
3. Find the center of room and place marks at each end, use chalk line to mark the centerline.
4. Screw Rotofast Snap-on Anchors 12" from each end. For 8 foot planks, insert 12" from each end and 24" increments in between; Anchors will be at 12", 36", 60", and 84".

Tools

- Pliers
- Chalk line reel
- Phillips screwdriver
- Drill with Phillips bit

Hardware

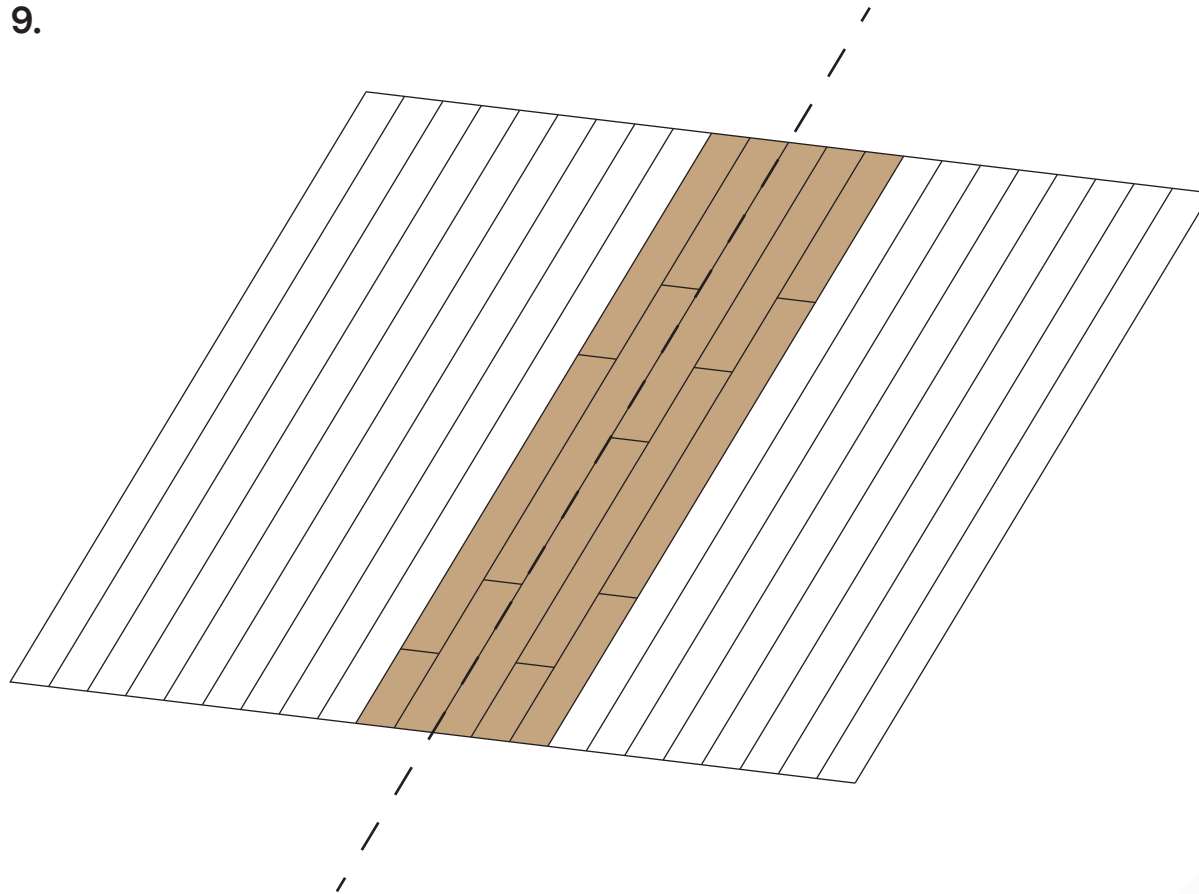
- Rotofast Snap-on Anchors
- Spacers/Stabilizers



Instructions

- Place Rotofast marking plugs into the Anchors on the plank, align the plank edge along the chalk line, and press firmly and evenly on the plank to mark the ceiling.
- On the ceiling, install the anchor on your mark, then screw the supplied screw and ratchet into anchor, making sure not to over-tighten, leaving the ratchet to spin freely.
- On the plank, remove marking plugs and insert lift-off spacers/stabilizers one inch from the edge.
- Install planks down the center of the space. Refer to the Field Cut Guide as to how to trim planks to meet evenly with the walls at the ends of the room-length plank installation. Use the spacers to provide an even reveal when installing the remaining planks.

9.



Tools

- Pliers
- Chalk line reel
- Phillips screwdriver
- Drill with Phillips bit

Hardware

- Rotofast Snap-on Anchors
- Spacers/Stabilizers

Instructions

9. Work from the center expanding the Aoudi installation outward. Start second row at one end and off set first plank by half (example: if plank is 4 ft, cut your second row plank to 2 ft and install).

Note: If necessary, use crown molding or millwork to address edges and spaces along edge. Crown molding or millwork not included.

